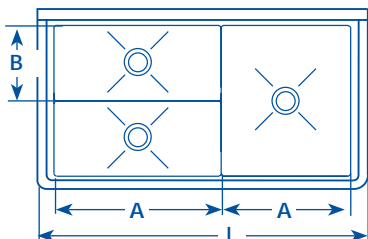


sinks

3 COMPARTMENT MEAT PLATTER SINKS

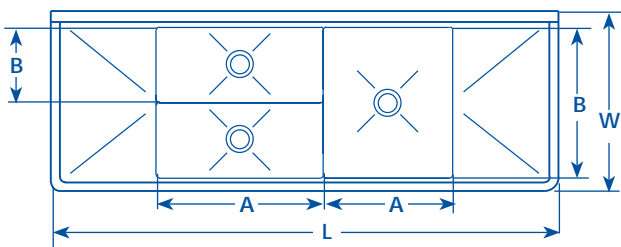
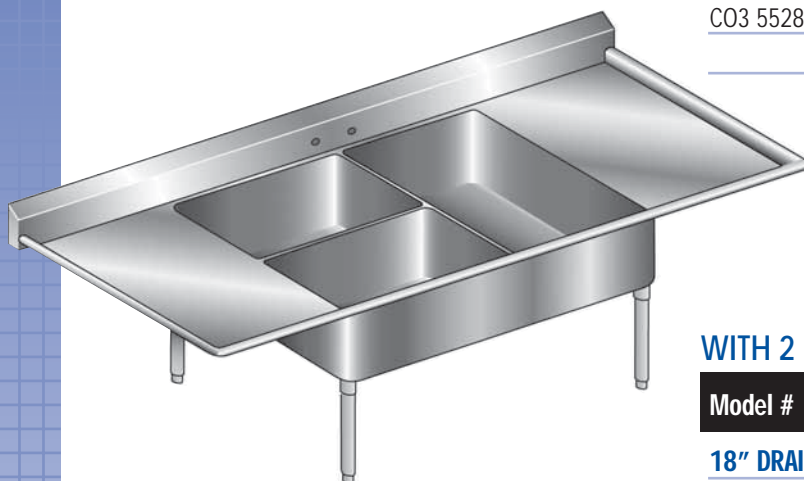
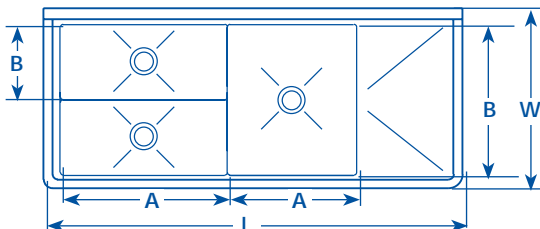


STANDARD M&E FEATURES

- Sink bowls are fabricated to NSF specifications with 3/4" radius corners.
- 16 gauge construction.
- All stainless steel is type 304.
- 8" high backsplash.
- Die formed bowl bottoms.
- Stainless Steel front skirt.

ALSO AVAILABLE (specify when ordering)

- 14 gauge construction.
- 14" bowl depth.
- Other sizes and configurations available.



WITHOUT DRAIN BOARDS

Model #	Bowl ("A" X "B")	Size Overall ("L" X "W")	Weight
C03 5528 11 MP	2@31"X14"	61" X 34"	197 lbs.
	1@24"X28"		

WITH 1 DRAIN BOARD SPECIFY (L OR R)

Model #	Bowl ("A" X "B")	Size Overall ("L" X "W")	Weight
18" DRAIN BOARD			
C03 5528 11 MP(LorR)	2@31"X14"	78" X 34"	251 lbs.
	1@24"X28"		
24" DRAIN BOARD			
C03 5528 11 MP(LorR)	2@31"X14"	84" X 34"	264 lbs.
	1@24"X28"		

WITH 2 DRAIN BOARDS

Model #	Bowl ("A" X "B")	Size Overall ("L" X "W")	Weight
18" DRAIN BOARD			
C03 5528 11 MP(LR)	2@31"X14"	95" X 34"	304 lbs.
	1@24"X28"		
24" DRAIN BOARD			
C03 5528 11 MP(LR)	2@31"X14"	107" X 34"	331 lbs.
	1@24"X28"		